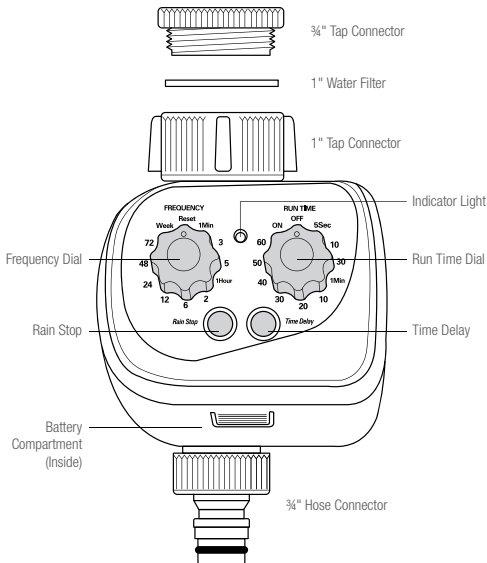




## STANDARD WATER TIMER

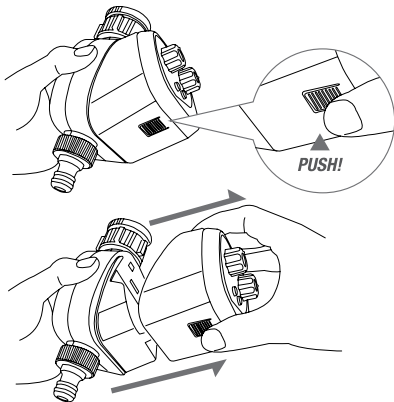
USED FOR GARDEN WATERING

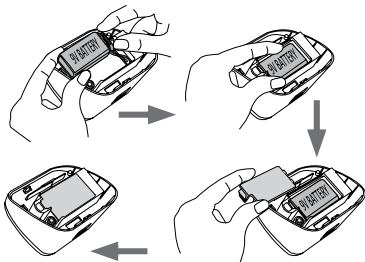
# STANDARD WATER TIMER



## How to install:

1. The timer must be vertically installed.
2. Place a new 9 V-alkaline battery into the battery compartment as shown below (using an old battery will decrease the overall operational time of the timer). First, remove the timer face by pressing the release button on the bottom side of the water timer. Then, insert the 9 V-alkaline battery into battery compartment. Finally, re-attach the timer face to the body. It is important to make sure you align the timer face with the body and the battery leads are recessed into the cavity in the timer body. (see pic. below)





3. Test to ensure the unit is operational. Simply turn the Run Time dial to the "ON" position. Within a few seconds you should see the indicator light flash twice and hear the click sound when the solenoid valve operates.
4. Program your timer prior to connecting to the tap. Or, if the timer body is already connected to the tap, take the front part of the control unit off the timer body to set up the program and then attach it back to the timer body.
5. Fit the timer to your garden tap:  
For  $\frac{3}{4}$ " taps – attach the water timer with the  $\frac{3}{4}$ " tap connector included directly to the tap. For 1" taps – attach the timer to the tap using the 1" tap connector by removing the  $\frac{3}{4}$ " tap connector included.
6. Hand tighten the  $\frac{3}{4}$ " or the 1" tap nut until secure. Do not use tools to tighten. Do not overtighten.
7. The water can now be turned on.

Your standard water timer gives you all the convenience of setting the frequency and run time of your garden watering, mist cooling or micro dripping system. Just select how often (Frequency) and how long (Run Time) you want to water your garden, to mist cool in hot temperatures, or to micro drip your plants – the timer will do the rest.

**Key features:**

- Easy to install and to program
- Attaches directly to AG 26,5 mm ( $\frac{3}{4}$ " ) and AG 30,5 mm (1" ) taps
- Suitable for automatic garden watering
- Time Delay feature
- Rain Stop feature
- Low battery indicator
- Runs on 1 × 9 V-alkaline battery
- Frequency: 11 watering frequencies from 1 minute to 1 week
- Run Time: from 5 seconds to 60 minutes

**How to program:**

Simply select your watering frequency and run time. The dials can be turned clockwise and anti-clockwise without damaging the mechanism. The indicator light will flash once to confirm that the program has been accepted.

**How to set the watering frequency:**

To set the watering frequency, turn the dial to the required frequency. Select every 1, 3 or 5 minutes for short cycle garden watering, mist cooling or micro dripping. Select for normal garden watering 1, 2, 6, 12, 24, 48, 72 hours or every week.

**How to set the Run Time:**

To set your run time, turn the dial to the required watering time. Select every 5, 10, 30 seconds for short time garden watering, mist cooling, micro dripping system, or select 1, 10, 20, 30, 40, 50 or 60 minutes for normal garden watering.

Watering will start with 1 more minute added to the first frequency cycle. This 1-minute allowance helps you to think and timely set up the whole program including the time delay function before operation. For example, if you set watering for every 5 minutes, each for a 10 seconds duration, at 9 AM, the timer will first come on at 09:06 (1 more minute added to the first frequency cycle), then every 5 minutes as a cycle at 9:11, then 9:16, 9:21 etc., every day for 5 minutes each time.

### **How to use the Time Delay function:**

You can delay your watering program start time by using the Time Delay function. Within one minute after you have set the program, press the Time Delay button for each hour you want to delay the initial start time of watering program being set. You can delay the watering program in an interval of 1 hour up to a maximum of 12 hours.

For example: If you want to delay the watering program for 3 hours, you have to press the Time Delay button 3 times within 1 minute after you have set the program. After this one minute the indicator light will flash twice to confirm that the whole program (Frequency, Run Time & Time Delay) has been accepted.

### **How to use Rain Stop function:**

In case of rain, you can stop the whole program any time by using the Rain Stop function. Just press the Rain Stop button to stop the watering program (the LED light flashes once). Press the same button again (the LED light flashes twice) to re-start the watering cycle as originally set.

### **Switching on the manual garden watering:**

To water outside of the set program, turn the Run Time dial to "ON" and water will flow from the selected outlet.

### **Switching off the manual garden watering:**

The water timer can be turned off by turning the Run Time dial to "OFF". This will stop the water flowing from the tap.

### **Low battery feature:**

When battery power drops below 7.2 V  $\pm$  0.2 V, the indicator light will be flashing, and the valve will be shut off. When the battery is completely flat, the light will go out and the water timer will stop functioning until a new 9 V-alkaline battery is inserted.

### **Battery care and timer maintenance:**

1. Make sure you use only a new alkaline battery. Keep clear of dirt and debris which may block the solenoid valve and cause the set program to stop.
2. Disassembling the timer improperly will void all warranties.
3. To prevent corrosion, always remove the battery when the timer is not in use for long periods of time or when the battery is low.
4. It is recommended to insert a new 9 V-alkaline battery if you are going away for an extended period of time. This will ensure watering as programmed.



## **Performance specifications:**

1. Recommended water pressure: 1.5 to 7 bar.  
Max. operating pressure 10 bar. In higher pressure areas, use a pressure reducer on the tap.
2. Recommended operating temperature: 4 °C to 60 °C.  
We recommend removing the timer during colder months (winter time), particularly where temperatures drop below 4 °C. The water timer should not be subjected to freezing temperatures or frosts.
3. Battery: 1 × 9 V-alkaline battery only.
4. Water source: Use cold mains water only. If it is a gravity fed watering system, ensure that you use a tap filter.
5. This product is not suitable for use:
  - if your water pressure exceeds 7 bar;
  - if you use bore or unfiltered water;
  - if you use any kind of pump to draw water;
  - if you use any liquid other than water that is flammable, explosive or corrosive; or
  - if the water supply pressure is unstable.

## **Troubleshooting:**

Please consider the following information, if the garden watering does not start:

- If battery is running low, the solenoid valve will close automatically.
- Ensure that the Run Time dial is not set to "OFF".
- Check that the Frequency selected is longer than the Run Time; eg., do not set a 20 minutes run time and a 5 minutes frequency.
- Make sure the "RS" (Rain Stop mode) is not turned on if it's not raining.
- Make sure the tap is turned on.

## **Guarantee:**

1. This standard water timer has a 12 month guarantee against defects in material and workmanship when used in normal home gardening, mist cooling and micro dripping applications. Our obligation under this guarantee is limited to the replacement of the product at our discretion for a period of 12 months from the date of purchase.
2. Use of this product outside of the performance specifications or improper disassembling of this product will void the warranty.



---

This document is protected by copyright. All rights based on this are reserved. No part of this publication may be translated, reproduced or transmitted in any form or by any similar means, electronic or mechanical, photocopying, recording or otherwise, or stored in a data retrieval system.

Our verbal and written advice relating to technical applications is based on experience and is to the best of our knowledge correct but is given without obligation. The use of REHAU products in conditions that are beyond our control or for applications other than those specified releases us from any obligation in regard to claims made in respect of the products. We recommend that the suitability of any REHAU product for the intended application should be checked. Utilization and processing of our products are beyond our control and are therefore exclusively your responsibility. In the event that a liability is nevertheless considered, any compensation will be limited to the value of the goods supplied by us and used by you. Our warranty assumes consistent quality of our products in accordance with our specification and in accordance with our general conditions of sale.